

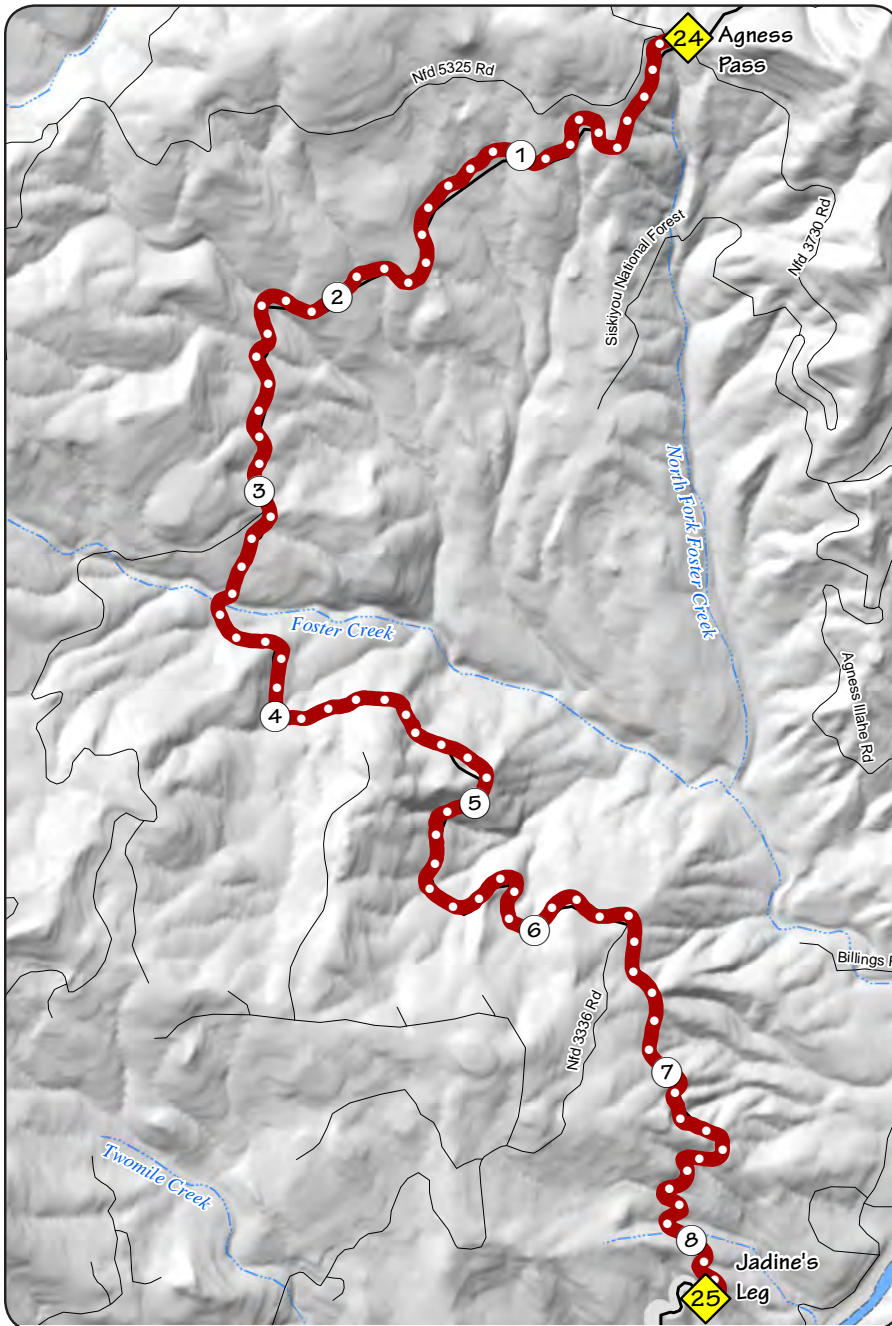
# LEG 25 - 8.2 MILES - CHALLENGING



Ex 25 opens: 3:00 am  
Run side: **RIGHT**, with traffic

No Cell Coverage

Safety equipment  
hours: 7pm to 7am



## LEG DESCRIPTION – Challenging

**Terrain** – Winding downhill, and Scenic

**Surface** – Gravel

**LEG NOTES** – Dusty, with a few pretty creeks on the right and a couple beautiful views of Rogue River on the left. Wear a damp handkerchief to block dust from getting into your nose and mouth.

**CAUTION** – Wear a damp handkerchief to block dust from getting into your nose and mouth.

**Vans** – Please slow way down to pass runners. Support runners in wide spots.

**Exchange Parking** – Tight

### Mileage

- 1.2 Mile marker 41
- 2.2 MM 40
- 2.5 Dry Creek on right
- 2.9 Road turns off to right
- 3.2 MM 39
- 4.0 Creek on right (road drops) Jadine's leap
- 4.4 View of Rogue River on left
- 5.2 MM 37
- 6.2 MM 36 & road to Lake O' Woods on right
- 7.2 MM 35
- 7.6 Creek on right and short asphalt strip of road

Ex 25 coordinates: 42°36'58.6"N 124°04'20.9"W

