

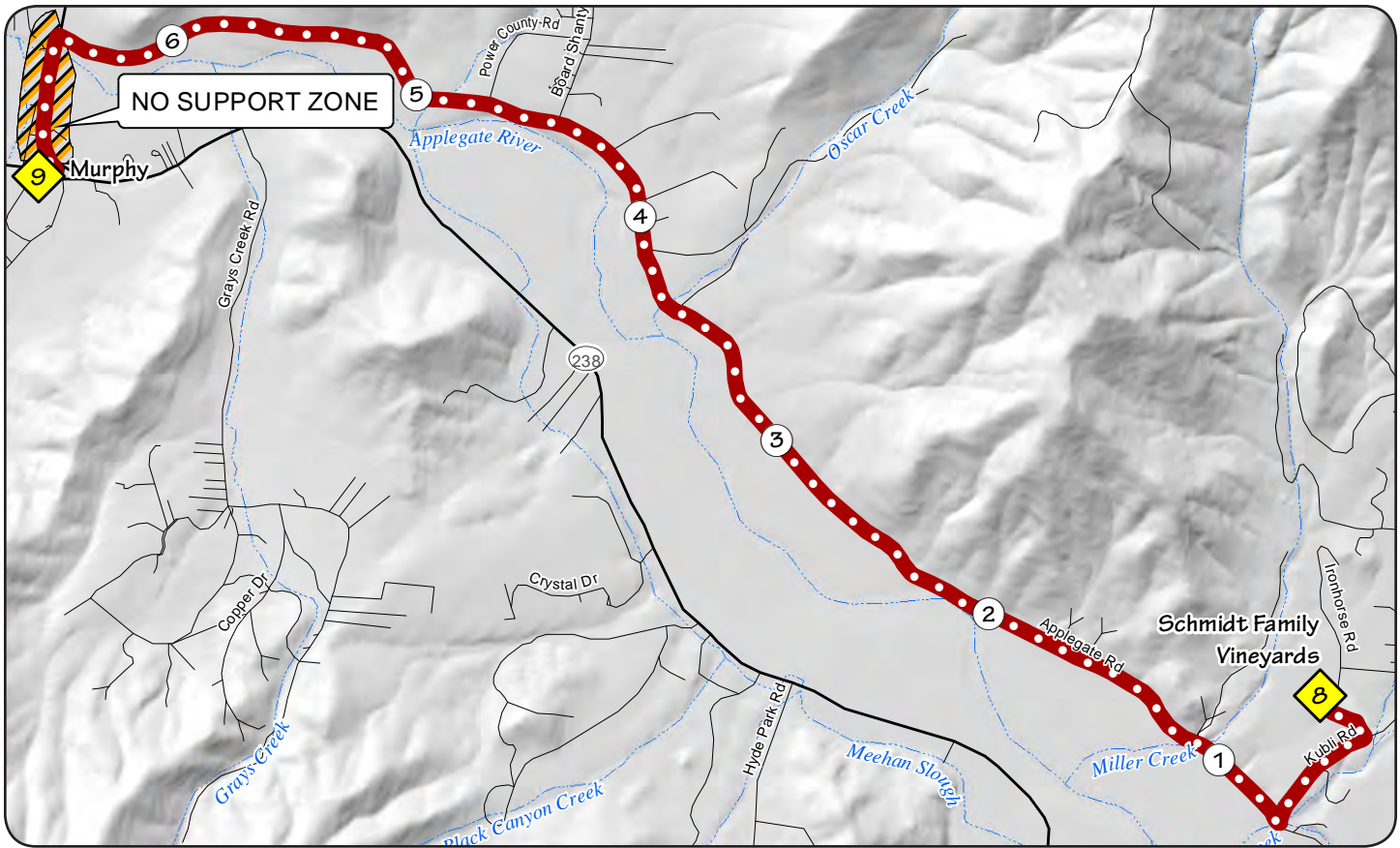
LEG 9 - 6.9 MILES - MODERATE



Ex 9 opens: 12:15 pm
Run side: **LEFT, facing traffic**

Good Cell

Safety equipment
hours: 7pm to 7am



Leg Description: Beautiful setting for a nice gentle rolling run along with the Applegate River. At 6.5 miles, there is a road crossing on a more busy country Rd.

Surface: Gravel in Winery, Asphalt

Van Instructions - Follow the runner's route and support runners by pulling completely off the Rd on the right. Don't give any support on the short stretch of Hwy 238. Park at the Hidden Valley Mkt. following the Volunteers instructions.

From Schmidt Family Vineyards

Run .25 miles out the entrance to the Winery and turn right on Kubli Rd

0.70 Turn right at the T intersection on North Applegate

- 1.15 Rd. Noble Farms on left.
 - 1.15 Small Bridge
 - 1.8 Large White house on right.
 - 2.1 Applegate River on left
 - 3.0 S curve and 35 MPH sign on the right
 - 3.4 3 mile marker on the left
 - 4.0 Left turn and 30 MPH sign
 - 4.5 Board Shanty Rd on right
 - 5.1 Left curve and a 30 MPH sign
 - 5.9 In yard on the left, there is an old gas station replica
 - 6.4 Left on Hwy 238, immediately cross the river on Bridge
 - 6.9 Right into the parking lot of Hidden Valley Mkt. and take a right to run along the parking lot closest to the Rd
 - 7.0 Exchange just past the Coffee shop
- Ex 9 coordinates: 42°20'15.7"N 123°20'00.1"W

